

## 2022-2023 Parent Communication

1/6

### Upcoming Dates:

**Jan. 9** - 1st Semester Reports Cards Available in IC

**Jan. 13** - Assessment Day (students attend for a 90 minute session only)

**Jan. 16** - **NO School** - Martin Luther King Jr. Day

**Jan. 19** - PTO Community Night (6:00 PM)

**Jan. 23** - Kindergarten Information Meeting for new families (9:00-10:30 am)

**Jan. 26** - Fire Drill

**Jan. 27** - Spring Class Picture Day

### **Mid-Year Assessment Day:**

Our mid-year assessment day will be on **Friday, Jan. 13**. On assessment day, there are no regular classes, however, your student(s) will come to school for one 90 minute assessment session. On Jan. 4, teachers sent out an electronic sign-up for a time. If you did not receive this communication, please reach out to your students' teacher.

A couple reminders for assessment day:

- There are no buses, breakfast, or lunch served on assessment day.
- Students should be dropped off in the front traffic circle 5 minutes before their scheduled time and enter through the front grade level door they typically enter:
  - K-1 - Main Entrance
  - 2-3 - First door in traffic circle
  - 4-5 - Last door in traffic circle
- 1st - 5th grade students should be picked up in the back bus lane or along the sidewalk in the back of the building and KG students should be picked up outside the KG playground.

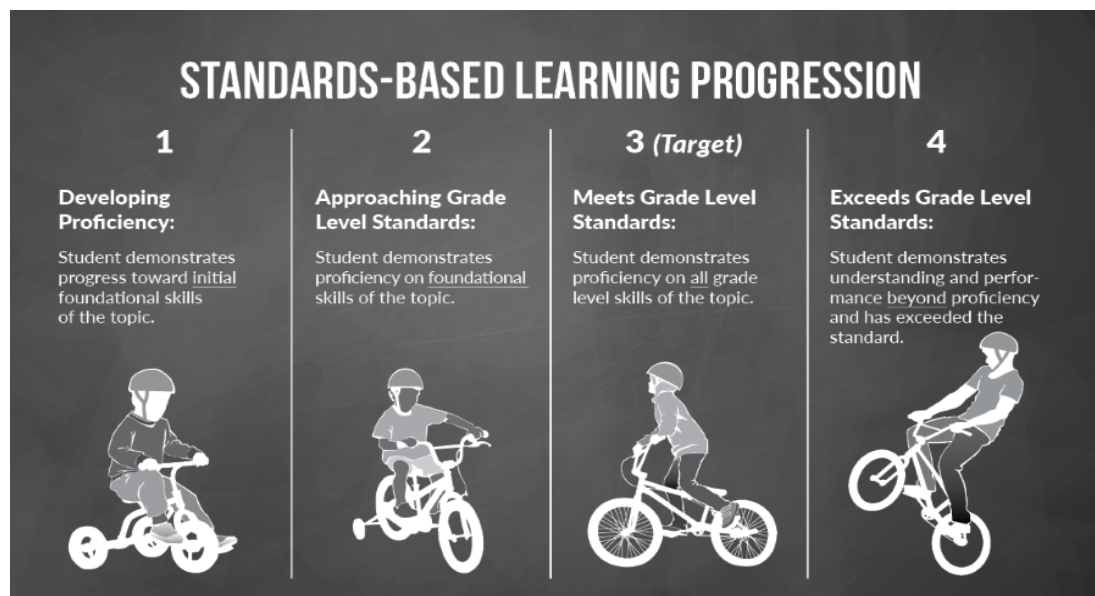
### **1st Semester Report Cards**

1st semester report cards will be available to be viewed in IC using the [parent portal](#) at 4:00 PM on Jan. 9. There you will be able to see your student's 1st semester progress marks in the form of a viewable/printable .pdf document. If you would like to have a printed copy, please contact the main office and we will print one for you. As you view student marks, it is important to remember a few things as it pertains to standards-based grading:

- Please remember that 1st semester grades are "in progress" marks that measure the current growth toward the end of year standards.
- 2nd semester grades will be a final report on the student's performance considering a grade level standard.
- Teachers use a body of evidence and data derived over time to determine a trajectory of performance compared to the standard.

- When looking in IC, you may see both practice (formative) scores used during the learning process as well summative scores that demonstrate the learning that has taken place following an instructional period.
- As we continue to work toward a "*growth mindset*" with our students, it is important that they understand that teachers work to meet each student where they are and celebrate individual growth from that point over the course of a school year. For example, a score of 2 at mid-year does not necessarily mean a student is behind, but making progress toward mastering an end of year standard.

The graphic below is a mental model that may help parents and students understand what each level in the progression means.



- 1's are areas where work is needed
- 2's approaching the standard (making adequate progress)
- 3's met end of year standard
- 4's exceeding end of year standard

If you have any questions regarding student progress, please reach out to your child's teacher anytime throughout the semester either by email or phone.

### Kindergarten Registration and Information Meeting

Do you have a student who will be entering Kindergarten this fall? [Enrollment](#) has now started. All enrollment is done online through [Adams12.org](https://Adams12.org). We will be hosting a Kindergarten Information Meeting on Monday, January 23 at 9:00AM. [Please sign up](#) and join us to hear from our Kindergarten team, Administrators, PTO and also take a tour of the school.

**Mrs. Combs' Social Emotional Learning Newsletter** - [SEL Newsletter for Families](#). If your child received a **SHINE yard sign** in December, please **return it to school by Fri. Jan. 20th.** Thank you!

### **PTO Assessment Day Lunch**

It's cold and snowy and will probably stay that way for a few weeks. Please help us in providing the Meridian teachers and staff a warm and delicious lunch on assessment day! Please drop off food by 9AM on January 13th. Click the link to sign up. (Link is also on the Meridian Elementary PTO facebook page in case this one breaks again.)

<https://www.signupgenius.com/go/10C0F4FABA823A6F8CE9-assessent>

### **F.I.S.H**

It's the **3rd graders'** month to bring in cereal for our F.I.S.H. project to stock our shelf at the food pantry. Please remember to send in a box or two of hot or cold cereal before winter break.